

Interiors & Décor

THE MAGAZINE AND THE ARCHITECTS

Special Feature:
**Architectural Hardware
and Fittings**

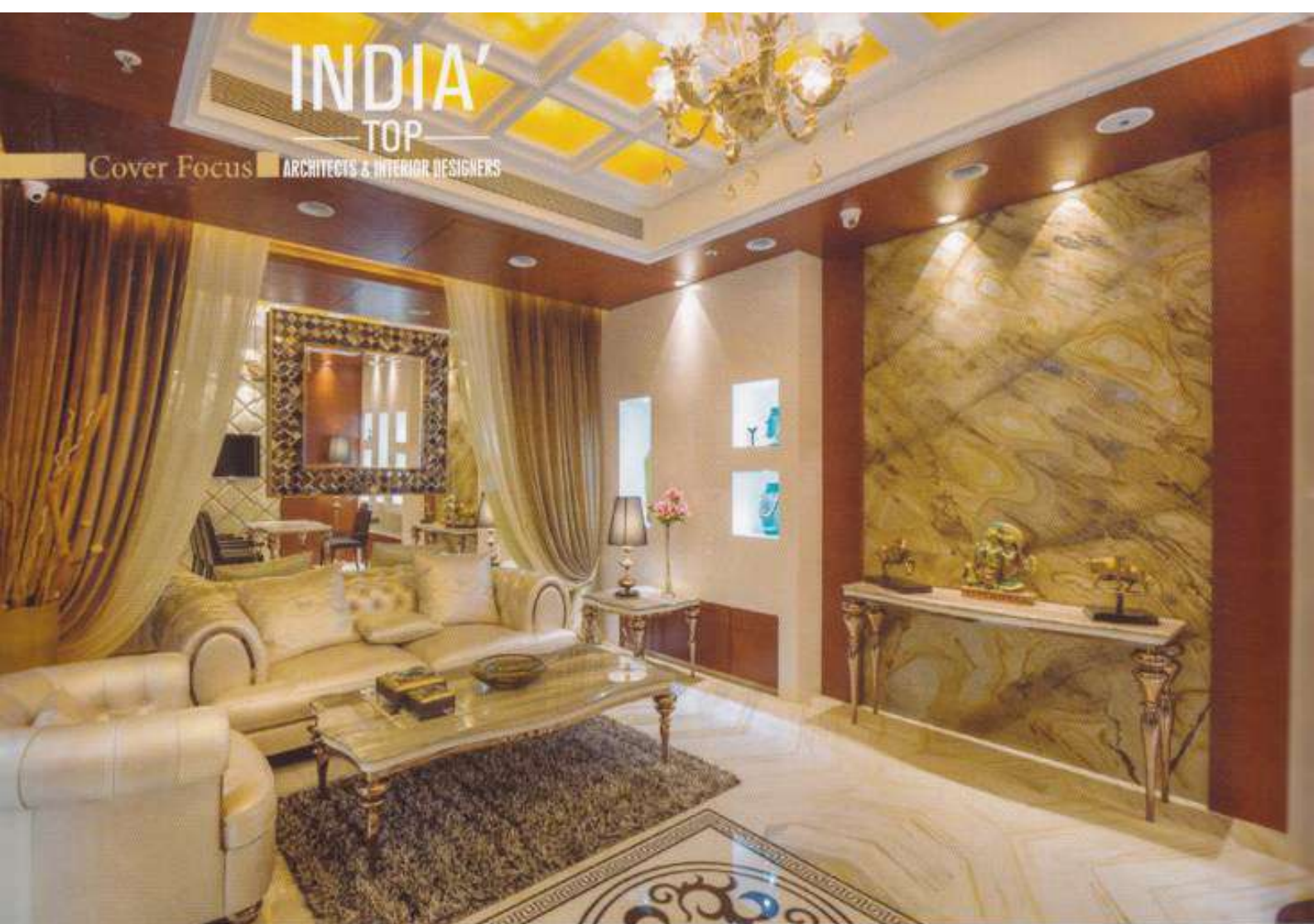
Post Event Special:
ET AceTech

Modern Furniture:
Navi

— INDIA'S TOP — ARCHITECTS & INTERIOR DESIGNERS

Ar. Kanhai Gandhi, Ar. Neemesh Shah & Ar. Shreshth Kashyap + Ar. Abha Narain Lambah
Ar. Prem Nath + Ar. Rishi Dev + Ar. Shirish Beri + Principal Ar. Bipratap Dhar
Ar.-cum-Interior & Product Designer **Shantanu Garg** + Principal Designer, **Shabnam Gupta**
Ambrish Arora, Ankur Choksi & Sidhartha Talwar





A STRONG EMPHASIS ON SUSTAINABILITY

Founder and Principal Architect of Epsilon, Bipratip Dhar has worked on a range of different building types including residential, commercial, retail, corporate and hospitality project. All his projects are excellent examples of quality design with strong emphasis on sustainability.

Founder and Principal Architect of Epsilon, Bipratip Dhar has almost over 18 years of architectural and interior designing experience, having worked on a range of different building types including residential, commercial, retail, corporate and hospitality project. Committed to quality design with strong emphasis on sustainability we are featuring two projects defining the excellence and perfection of his work.





otherwise narrow space. The entire space is characterised by large floor to ceiling heights. Thus, the showroom has marble clad walls with display on both sides that merge seamlessly into the décor and is also a highlight for the same. The interesting shape of the decorative gold leaf ceiling mimics itself in the flooring below in the form of a dark marble inlay. The inlay and the decorative ceilings, in a way, leads one into the executive lounge area characterised by a large high gloss wooden door. The lounge has new-classical furniture, customised and handpicked from various places in India & abroad, along with the accessories and flowing fabric, all make the ambience very rich and inviting. The marble in its various shades, the reddish dark veneer, different planes on the ceiling, the neo-classical furniture with various pendant lights and accessories that merges the contemporary with the classic, all add up to the rich and opulent experience.

B.C. Jain Jewellers, Kolkata

Located in the heart of a busy Kolkata Street, the design of the store spells opulence & grandeur, catering to a very high-end clientele, this jewellery store is intended to have an ambience that would have a rich, pampered and comfortable experience for customers. The square shape of the premises has a rather elongated reception and waiting area that extends towards the showroom on one side and also has a separated entrance leading to the in house office areas. The showroom had to be a deliberately kept on the opposite end so as to accommodate the main chambers along with the locker room in the south-western side owing to Vaastu. Thus, the elongated reception leads into the rectangular showroom area that also accommodates a lounge area at the furthest end and also has access to the back office areas that houses the main chambers, locker room, the karigar rooms, accounts and assortment room for gems amongst others. The gold steel entrance door leads one into the reception area with a backlit veneer wall on one side and large floor to ceiling mirror on the other wall that somewhat doubles the



Private Apartment at Lower Rawdon Street, Kolkata

A modern design, good proportions, spacious and well lit rooms and the use of subtle colours in the form of various materials define the design of this residence. Situated in an upmarket residential area of Kolkata, the design is an amalgamation of two



apartments spreading east to west over an entire floor. Meant for a joint family, the design accommodates two separate living, dining and kitchen areas with six bedrooms, a puja room, home theatre space and a separate study room. Strictly modern in character, the design changes its colour palette as one progresses from one living area to the other. Thus, the living areas on the western side wears a cool look by being white & light beige with a hint of blue punctuated by dark zarcote veneer whereas, beige and various other shades and tints of brown bring warmth and enhance the other living area on the eastern side. The contemporary look is carried on into the bedrooms with the master suite designed with walk-in closets with an inbuilt dressing area, which also forms the intermediate space between the bedrooms and the toilets. The residence gradually unveils more bold colours in the children's bed rooms & study areas with shades of green, blue, red and yellow holding centre stage. Thus, fabric, paint and veneer in various colours and textures come together to bring about the lively, happy look. ■

