



Homes & Styles

**INTERNATIONAL  
MAGAZINE**

relook.redefine.redesign

**DIGITAL SUPPLEMENT**



**5**

Great Kitchen  
Ideas

**11**

Residential Design  
in Post Covid-19

**14**

Swarnamani Apartment-  
Kolkata, India



# SWARNAMANI



BY Epsilonarch

Photographer: Ravindra Kanade

Located on the eighth floor of a high-end residential complex in Kolkata, India.

The 2500 square foot south facing apartment, was open on two sides towards the east and west. Open on three sides, this dwelling design is a suave combination of simplicity and sophistication. The existing layout from the builders had four modest sized bedrooms, a kitchen and a living dining hall with an adjoining terrace. Meant for a family of four, the space plan, revolved around designing an apartment with mostly concrete shear walls, into separate functional zones, knocking down brick walls wherever necessary, according to the owner's functional needs and aesthetic requirements.

Thus, the entrance opens out to the living and dining area, a space for puja, a visually open kitchen with glass partition and a lavish triple height terrace.





With the generously retained large openings on the east and western directions, with views extending to the semi open terrace and beyond, the living dining hall exudes warmth and style. The kitchen, separated by a glazed partition wall appears to be a part of the living area visually, displaying in built wall systems adding to the elegance. A red travertine wall, positioned at the front of the passage leading to the bedrooms that houses a decorative wash basin, somewhat reduces the linear look of the passage.

The “corridor look” is reduced further, with the help of the sliding /folding door arrangement, in the home theatre room adjoining the kitchen- closed only when necessary for sound proofing and privacy.

Family portraits of different sizes adorn the opposite wall of the passage creating an interesting view as one would saunter along. The terrace, complete with greenery and a vertical garden amplifies the grand views of the urban landscape around.











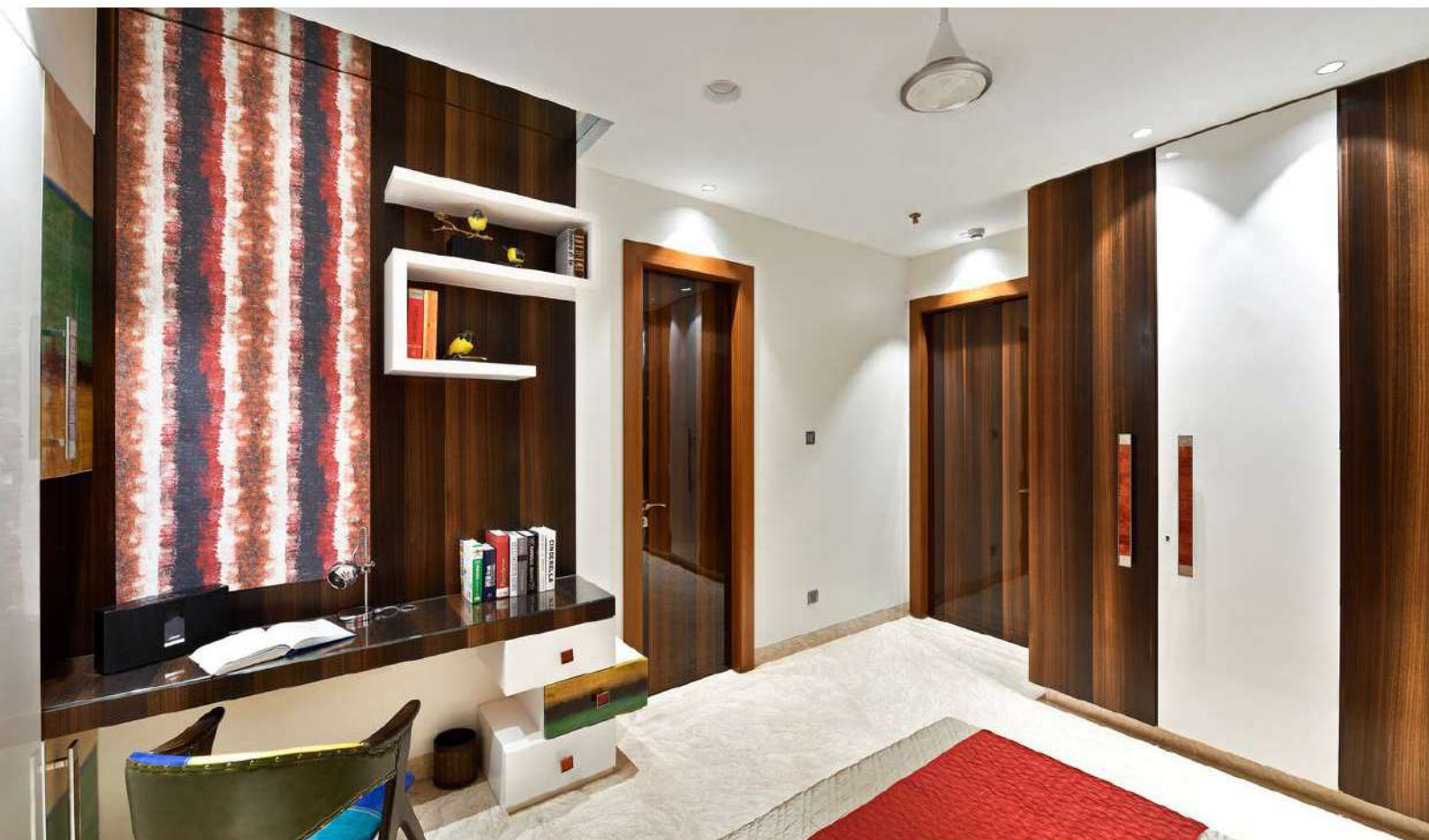
With not much flexibility available with the existing concrete shear walls, the bedrooms and washrooms were retained at their existing positions with minor civil changes.

All the bedrooms express warm domestic comfort with a nod to modern sophistication.

From the warm colours to the textured surfaces; from the specially selected furniture to the furnishings and accessories, everything speaks of elegance through simplicity.

Some of the additional choices such as rugs, wooden floors, pendants, vases and paintings are all contributing towards a totality of warm and homely experience. With a minimal aesthetic and crisp neatness, the apartment finds expression through intelligent use of material, different planes in the ceiling, carefully chosen furniture and furnishings.





APARTMENT SWARNAMANI, KOLKATAYEAR OF COMPLETION: 2018LOCATION: SWARNAMANI, Eastern Metropolitan Bypass, KolkataTYPE OF PROJECT: APARTMENT





Care has also been taken with the lighting design, to offer a variety of effects which adds to the dramatic nature. The bedrooms are minimal and calm, with different colour palettes to suit the inhabitants. A beige Italian marble flows throughout the apartment colluding with the dark brown veneer and light-coloured walls with a high plain ceiling with the projection of natural light from the large windows softening the impact of the dark surfaces. Flowing white sheer fabric adds to the softness by diffusing light and enhancing privacy. Beiges and whites dominate the bedrooms with soft splashes of colour used in the fabric, furnishing and accessories.



ARCH. BIPRATIP DHAR