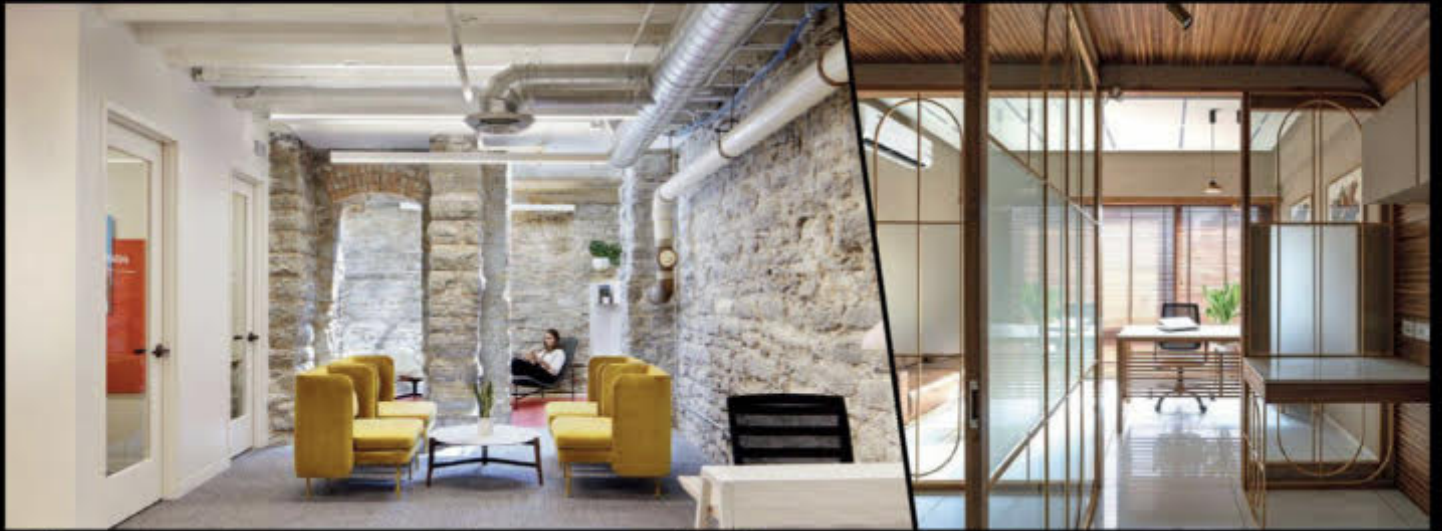


ARCHITECTURE+DESIGN

A N I N D I A N J O U R N A L O F A R C H I T E C T U R E



LIVELY OFFICE INTERIORS



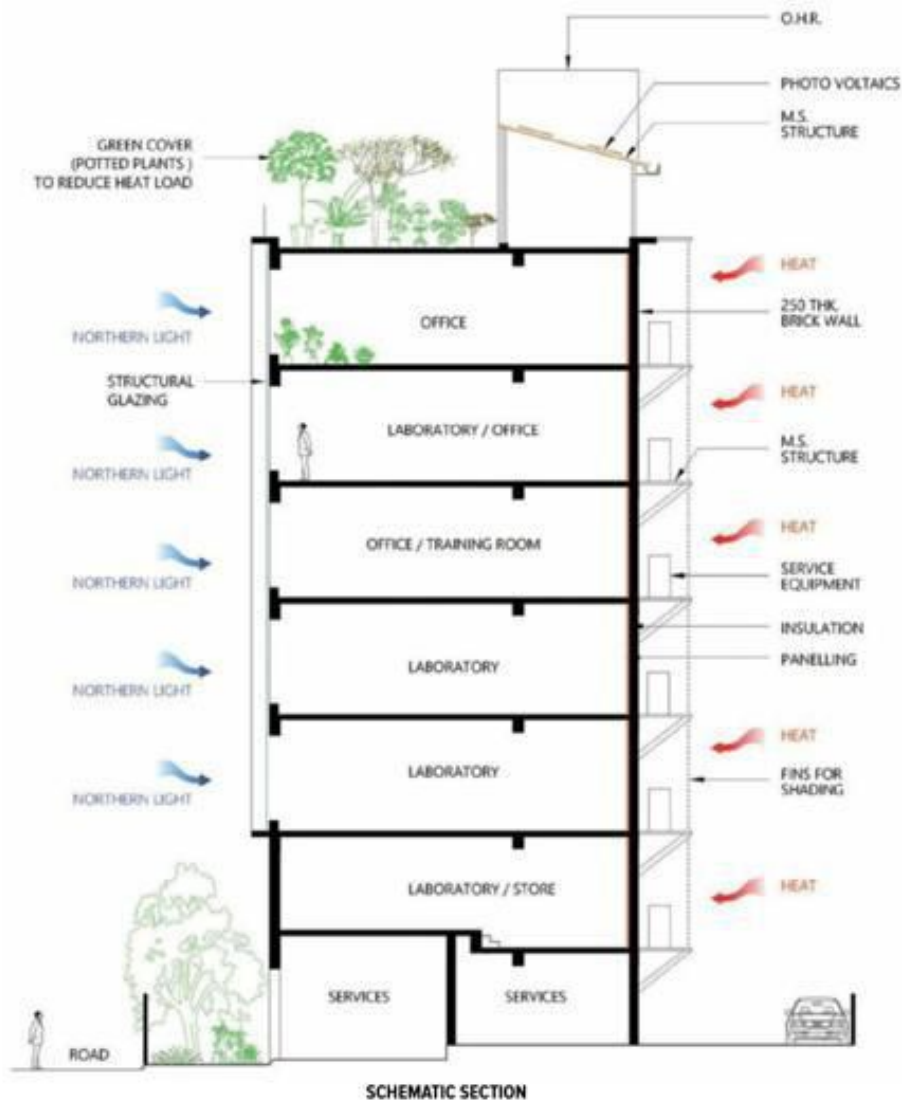
Creating Well-orchestrated Spaces

Project: Suraksha Diagnostics & Eye Centre (P) Ltd., Kolkata
Architects: Epsilon Architecture Interior, Kolkata



Ar. Bipratip Dhar





Established in 1992, Suraksha remains as one of the finest diagnostic centres in Kolkata to provide all pathology and radiology services under one roof. With centres spread all across the region, the main aim was to set up a state-of-the-art centralized laboratory along with the corporate headquarters. The brief included a physically attractive office for the organization without being extravagant; open, well-orchestrated spaces, furnished with breakout areas, formal and informal meeting rooms, lounges, workstation areas and private chambers to encourage collaboration and functionality. Spanning over multiple floors, zoning, separating and amalgamating various departments of the office posed a formidable challenge during the space planning process. A longitudinal, rectangular strip stretching







50m east to west and 20m north to south worked as an advantage. Even though the plot was deprived of a decent depth, the longitudinal façade running parallel to the adjoining road enhanced the look, with large glazed openings, making full use of the soft north and eastern light all throughout the day. Large, thick walls adorn the rear part of the building facing south and west with few or no openings, minimizing heat intake. Conforming to strict regulations and local bye-laws, the ground +6 storeyed structure makes full use of the available floor area ratios. Thus, the massive rectangular mass is broken

down to one large volume of blue glass framed in white, standing on double heighted stilts and a slightly staggered linear mass on the first floor clad in yellow ochre stone. A colourful band cutting midway across the glass skin acts as a highlight to the façade and also adds colour to the interior spaces. An origami inspired artwork adorns the double height wall of the parking area on the ground floor.

Diffused natural light takes centre stage in the design along with a glare-free view of the surrounding. Natural light bathes the entire space all throughout the day changing



- 1. LIFT LOBBY
- 2. LIFT SHAFT
- 3. STAIR
- 4. SERVICE
- 5. LABORATORY
- 6. TOILET
- 7. DRINKING WATER
- 8. OFFICE
- 9. TRAINING ROOM



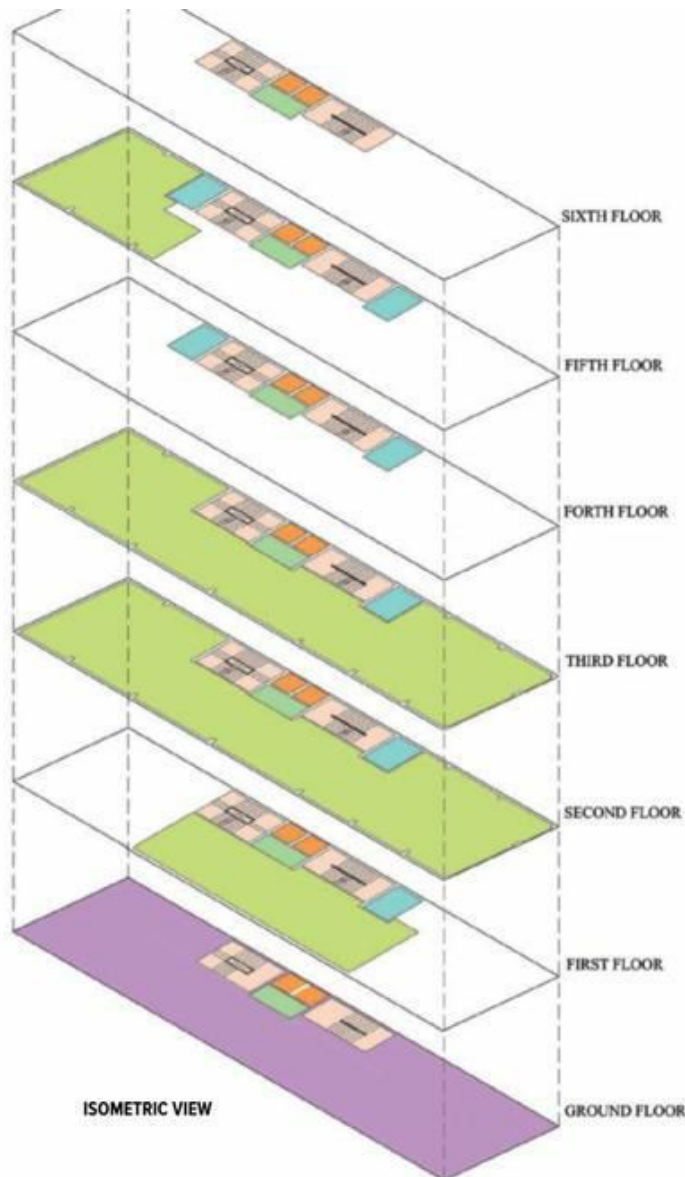


FIFTH FLOOR PLAN

- 1. LIFT LOBBY
- 2. LIFT SHAFT
- 3. STAIR
- 4. SERVICE
- 5. LABORATORY
- 6. TOILET
- 7. DRINKING WATER
- 8. OFFICE



SIXTH FLOOR PLAN



ISOMETRIC VIEW

- LIFT SHAFT
- LABORATORY
- LIFT LOBBY
- TOILET
- STAIRS
- GARAGE & SERVICES
- OFFICE

hue at different times. The various activities of reception, board room, lounges, breakout areas and enclosed chambers unfold and separate themselves with the help of transparent glass partitions. Glass plays a unifying role in connecting the various areas visually in the design, incorporating concealed motorized blinds that silently segregate areas whenever privacy is required.

Tones of beige on the floor compliment and contrast the dark wood finished walls accentuated with grey travertine and concrete texture paint. The rather plain ceiling painted white highlights the illumination fixtures; the large vases add glamour to the otherwise very straight lined and crisp interior. To generate a lively contrast, light coloured fabric and a warm colour palette on furniture and panelling is used against a backdrop of sleek glazing. The interior blends seamlessly with the exterior helping each other in creating open, airy and brightly lit spaces.

Conforming to local regulations, solar panels have been incorporated in the terrace to cater to a portion of the electrical load. A green zone planned in the ground floor facilitates rainwater percolation. The north to south orientation of the building impedes lower heat gain as the entire south and south-western sides have thick walls with little or no openings. As the structure opens out on the northern side, large glazed openings facilitate the use of natural light all throughout the day relieving stress from electrical illumination. Various treatment systems have also been incorporated into the building to remove contaminants and effluence from waste water. +



FACTFILE

Design team: Bipratip Dhar, Biprajit Poddar, Jilmit Rajkhowa Bose, Niharika Tekriwal, Sourav Biswas
Associations: Council Of Architecture (COA)
Area: 33,900 sq ft
Cost of project: 11,40,00,000
Year of completion: 2018