



EPSILON

Epsilon excels in design consultancy and execution for a variety of projects, which ranges from large complexes to interior designs. Principal ongoing projects of the architectural practice include commercial complexes, auditoriums, schools and residences. Interior design projects executed so far include hospitality spaces, corporate offices, retail outlets, residences, and commercial spaces.

BIPRATIP DHAR

Founder and principal architect of Epsilon, Bipratip Dhar graduated from Sir J.J. College of Architecture, Mumbai in 1996. Based in Kolkata this 14 year old architectural firm strives to incorporate the concepts of sustainability and energy conservation in all of its designs. Epsilon's portfolio spans across architectural and interior design solutions for auditoriums, corporate offices, retail outlets, residential, commercial spaces, hospitality projects and healthcare institutes.

FACT FILE

Project	Associations	Location	Area	Flooring	Mirrors	Lighting	Wall coverings	Year of completion
Dalhousie Institute, Kolkata	Council of Architecture (COA)	42, Jhowtolla Road, Kolkata	3500 sqft.	Black flamed Granite	Modi Float	LED from Phillips	Paint, Exposed bricks, Leather cladding for acoustic insulation	2010



Concept:

Located in Kolkata, "Dalhousie Institute" has a great historical background. Reputed as a family club, the members wanted the lounge and bar of this institute to wear the old world charm and warmth while fused with contemporary elements generally associated with lounges.

Mostly frequented by members during evenings, the brief included a performance area to form the main focal point. Amalgamating a couple of existing rooms by knocking down walls, the area was converted into one single hall-like space. A serious problem of humidity resulting in dampness on all existing walls was also to be dealt with.

With a structural engineer's help, the load bearing walls were reduced

Design Team: Bipratip Dhar | Biprajit Poddar | Ratnadeep Roy Choudhury

KOHLER. bathrooms.
Art doesn't need to be hung on a wall.

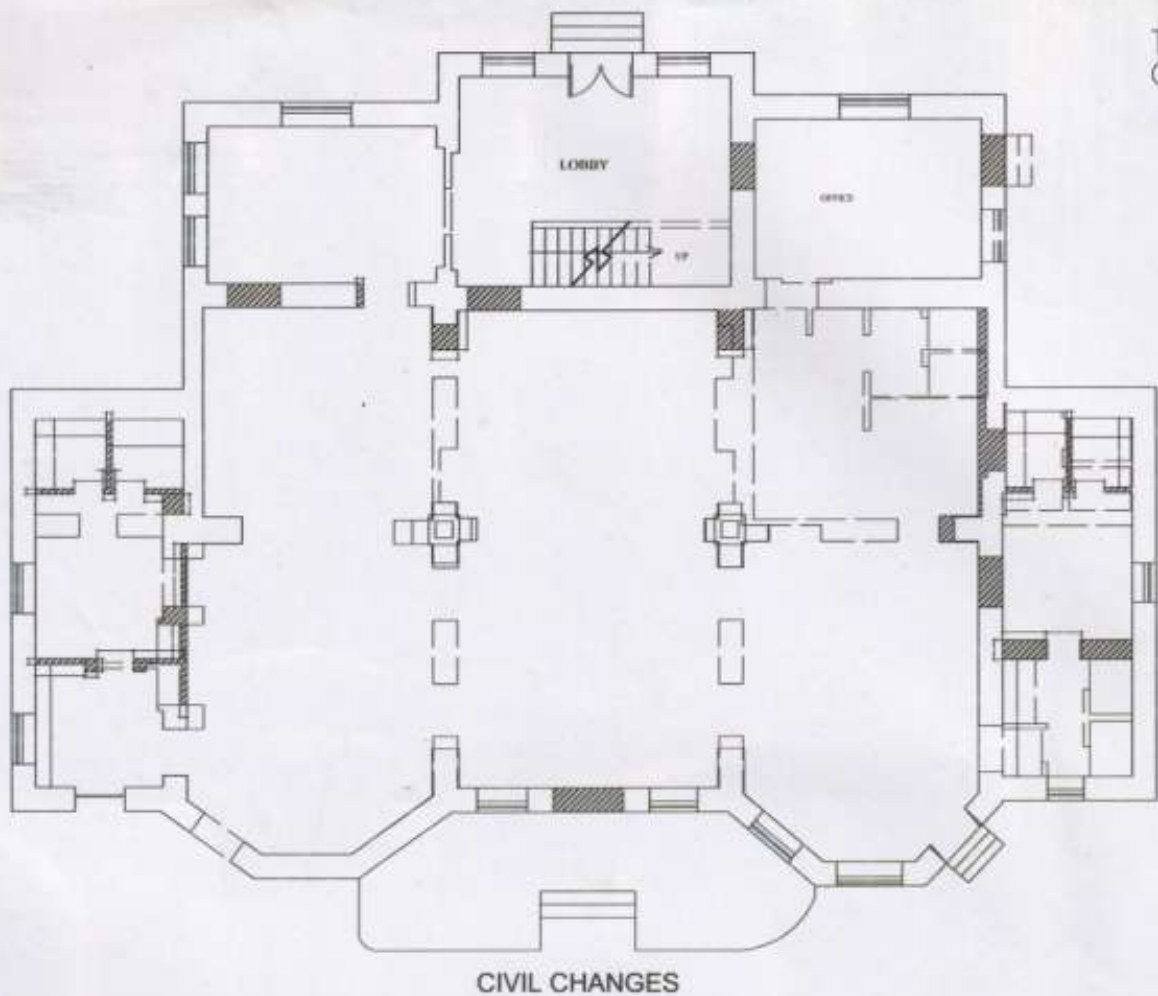
Featured here Artist Editions, Marrakesh, inspired by Moorish architecture.



KOHLER CO.

THE BOLD LOOK
OF KOHLER.

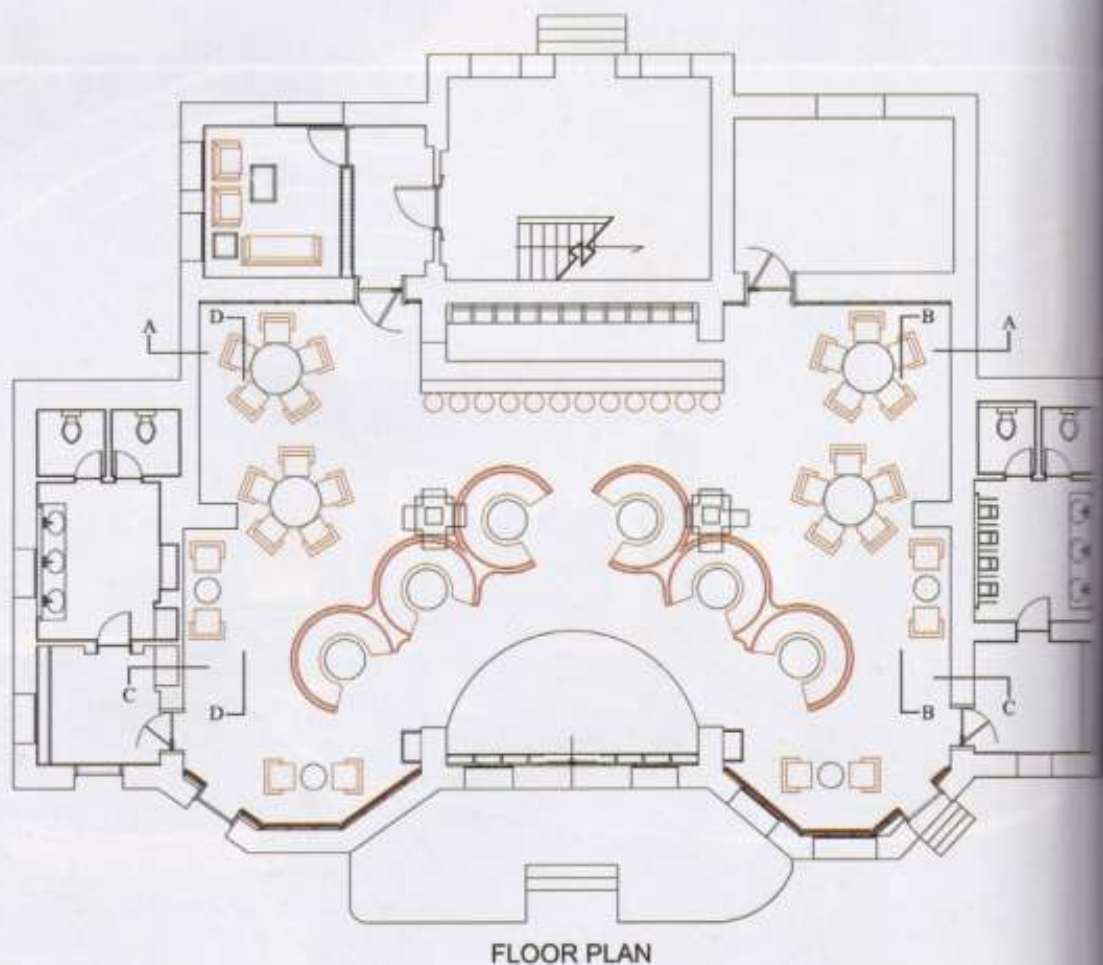




CIVIL CHANGES

with all necessary supports and an amphitheatre-like seating radiating out from the performance area was developed to enable uninterrupted views from all seats. The problem of dampness was solved effectively by rehabilitating large parts of the affected walls by ripping off existing plaster, adding to the aesthetic and acoustic enhancement. This also enabled the walls transpire or breathe as we called it.

The flamed granite flooring, dark walnut coloured furniture, and the rusted chains hanging from above exposed brick wall add to the air of old world feel. The raw plywood wall panel done with vertical ply pieces fixed in different thicknesses also accentuates the rustic look. The wave ceiling forms



FLOOR PLAN



striking contrast to the dramatic effect
low. Done with the help of flexible ply,
these curved boxes house LED strips that can
be programmed to different colours during

different occasions. The circular shape of the
group seating around the stage finds itself
repeated in various sizes on the bar, bar
backdrop, doors and on the furniture design

as well. The images framed on the brick walls
showing the erstwhile Dalhousie Institute
building in sepia tone, compliments the rough
surface underneath.