

HOME & DESIGN

Volume 1 No 1 ₹250

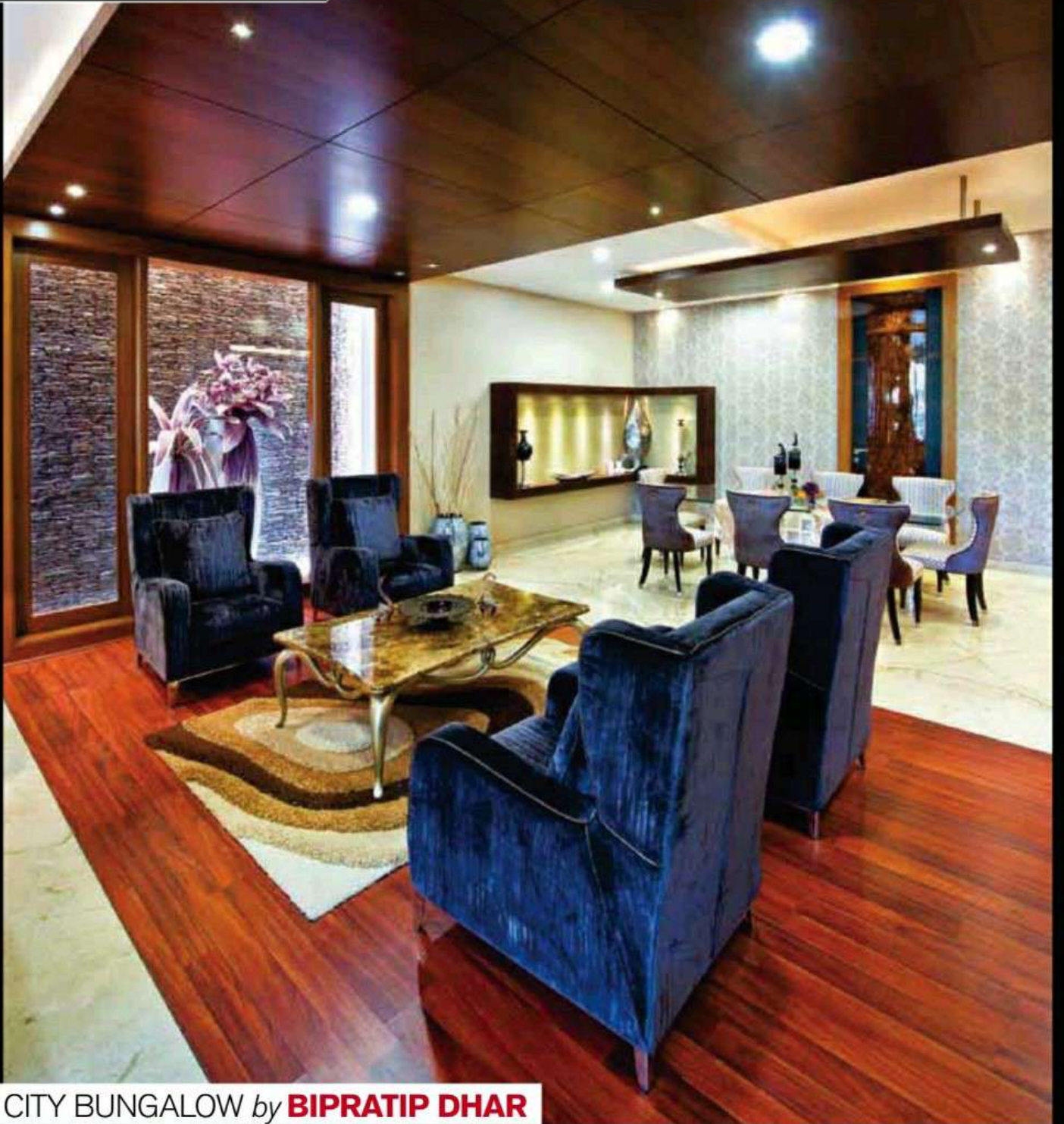
TRENDS



MW88130501

INDIA'S TOP 10 HOMES

2013



CITY BUNGALOW by **BIPRATIP DHAR**



“The 80 x 45 ft plot is rectangular in shape and according to new regulations, we could build to an increased height of about 40 ft. While this meant more space for the owners, it brought with it the risk of the structure becoming a big, linear mass due to the plot's dimensions”

-Bipratip Dhar



Working around an inadequacy doesn't always entail thinking out-of-the-box. Sometimes, it can simply mean reducing the perception of the limitation. The flipside then no longer remains one. This is the approach Kolkata-based architect Bipratip Dhar adopted to break away from the limitations a linear plot offered. Breaking away mass was critical to do away with

the linearity. To achieve this, Dhar has eliminated chunks of mass from the structure at varying levels; added horizontal fins in the front facade and has played with materials and textures to add depth to the residence. This house is spread over three floors. The formal living, dining, TV room, guest bedroom, powder room and the kitchen occupy the first floor. The living

room's double-height connects it with the upper floors. Two bedrooms take up most of the space on the second floor. The topmost floor has been built as a self-contained unit, and has a bedroom, family room, pantry, bar and an enclosed terrace. This floor is one of the most interesting spaces of this bungalow as it can be used as an independent apartment as well.

FIRM NAME:
Epsilon, Kolkata

LOCATION:
Kolkata, West Bengal

BUILT UP AREA:
8000 sq ft

 **See the full story at**
[Trendsideas.com/go/39999](https://www.trendsideas.com/go/39999)